



# M 502

## TWO-WAY PASSIVE SPEAKER



### Description

M 502 is a multipurpose two-way twin-woofer full-range speaker system, suitable in a wide range of installations. The compactness, together with the elegant and neutral design with accurate finishing make M 502 suitable for almost any environment and architectural constraint. Available mounting accessories allow you to use the M 502 wall or ceiling mounted, with reference to the several possible applications. The M 502 has a controlled coverage through its twin 5" and the precise constant directivity horn. The SPL and the level of undistorted sound the M 502 can reach is far above any expectation from such a compact solution. The M 502 features high sensitivity thanks to the use of oversized magnets and a comfortable sound quality with smooth and wide frequency response performed thanks to the Kapton diaphragm compression driver loaded with a constant directivity horn. The LICC crossover design includes an electronic protection on high frequency device.

### Features

- › High Quality 2-way passive loudspeaker
- › 2 x 5.5" woofer, vented
- › 1 x 1" in driver, on 90°x90° CD horn
- › High Power Handling 'Low Impedance Compensated Crossover', with electronic protection for the driver
- › 100W AES power handling
- › Steel Front Grille with robust double mesh polyester clothing
- › Rotatable RCF front logo
- › Installation points are available on the rear panel, top and bottom
- › All models have a 4-pin EUROBLOCK connector (audio input and parallel link output)

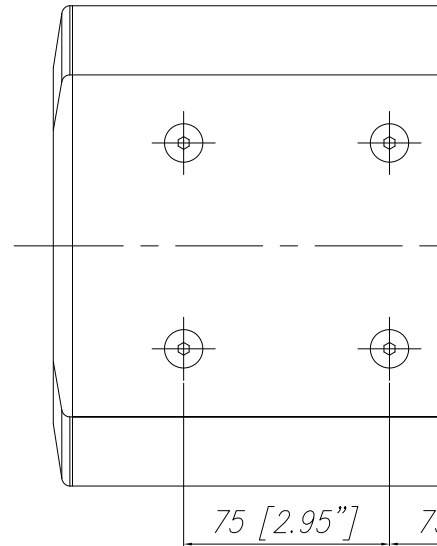
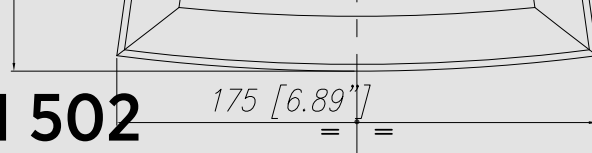
### Part Number

13041011 M 502 8ohm Black EAN 8024530007539



# M 502

TWO-WAY PASSIVE SPEAKER



Line Art 2D

**Acoustical specifications**

**TECHNICAL SPECIFICATIONS**

Frequency Response (-10dB)	80 Hz ÷ 20000 Hz
Max SPL @ 1m	116 dB
Horizontal coverage angle	90°
Vertical coverage angle	90°
Directivity index Q	9
System Sensitivity	92 dB

**Power section**

Nominal Impedance	8 ohm
Power Handling	100 W
Peak Power Handling	400 W PEAK
Protections	Dynamic active mosfet
Crossover Frequencies	2300 Hz

**Transducers**

Compression Driver	1.0", 1.5" v.c
Woofers	2 x 5.5", 1.2" v.c

**Input/Output section**

Input connectors	Euroblock
Output connectors	Euroblock

**Standard compliance**

Safety agency	CE compliant
---------------	--------------

**Physical specifications**

Cabinet/Case Material	MDF
Hardware	6 x M6, 2 x M10
Grille	Steel with robust double mesh polyester clothing
Color	Black

**Size**

Height	470 mm / 18.5 inches
Width	175 mm / 6.89 inches
Depth	185 mm / 7.28 inches
Weight	8 kg / 17.64 lbs