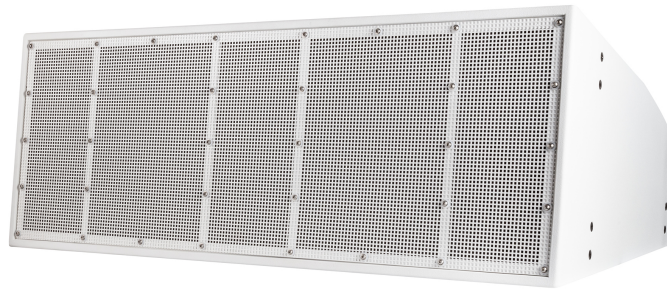




HVL 15-S

BANDPASS SUBWOOFER SYSTEM



Description

HVL 15-S is a double 15" subwoofer system for long-throw applications, outfitted with 2 x 15" woofers. Equipped with the latest generation of RCF precision transducers with powerful neodymium magnets, HVL 15-S provides very high output and accurate sound reproduction. The system can produce a max SPL of 133 dB, handling 3000 W. The enclosure is trapezoidal with a coupling angle of 15°. The cabinet is made of Baltic birch plywood, and the finishing is a waterproof, textured, polyurea coating. A heavy-duty, weatherproof barrier strip provides connections. The grille is in epoxy coated heavy-duty steel with open-cell fibers and water repellent woven-fabric backing.

Features

- › 3000 W power handling
- › 133 dB max SPL
- › 33 ÷ 180 Hz frequency range
- › 2 x 15" high-power woofers
- › Symmetric design
- › Baltic birch plywood cabinet and steel grille
- › Weatherproof treatment

Part Number

13000705 HVL 15-S W

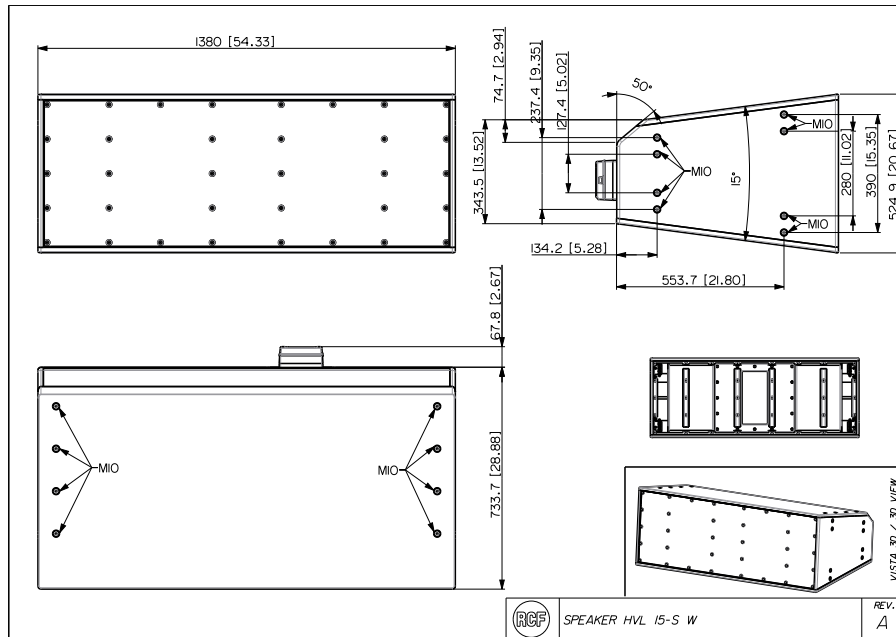
White - RAL 9010 EAN 8024530018719



HVL 15-S

BANDPASS SUBWOOFER SYSTEM

Line Art 2D



TECHNICAL SPECIFICATIONS

Acoustical specifications	Frequency Response (-10dB)	33 Hz ÷ 180 Hz
	Frequency Response (-3dB)	40 Hz ÷ 150 Hz
	Max SPL @ 1m	133 dB
	System Sensitivity	97 dB
Power section	Amplification	Bi-Amp
	Nominal Impedance LF	8 ohm
	Power Handling LF	1500 W
	Peak Power Handling LF	6000 W
	Sensitivity LF	97 dB
	Nominal Impedance LF2	8 ohm
	Power Handling LF2	1500 W
	Peak Power Handling LF2	6000 W
Transducers	Recommended Amplifiers	XPS 16K, XPS 16KD, QPS 10K
	Woofer	2 x 15", 4.0" v.c
Input/Output section	Input connectors	Screw Terminals
	Output connectors	Screw Terminals
Standard compliance	Safety agency	CE compliant
Physical specifications	Cabinet/Case Material	Baltic birch plywood
	Hardware	n° 8 x M20 on each side panel n° 8 x M20 on top and bottom panel
	Grille	Steel
Size	Color	White - RAL 9010, Black - RAL 9005
	Height	525 mm / 20.67 inches
	Width	1380 mm / 54.33 inches
	Depth	734 mm / 28.9 inches
	Weight	110 kg / 242.51 lbs