

4 channel Class D network DSP power amplifier



DDA-48DT 4 x 800W@8Ω / 4x1600W@4Ω

DDA48-DT is a 4 channel network DSP power amplifier, with integrated DSP processor, 4.3 " capacitive touchscreen color display and other powerful functions. This power amplifier supports a variety of input methods: analog/AES3/Dante network. User can select each analog or Dante signal with its priority, to realize signal backup function. Support constant resistance 8Ω/4Ω and constant voltage 100V/70V. Standard FIR automatic linear magnitude and phase function provides a powerful setting method for speakers.

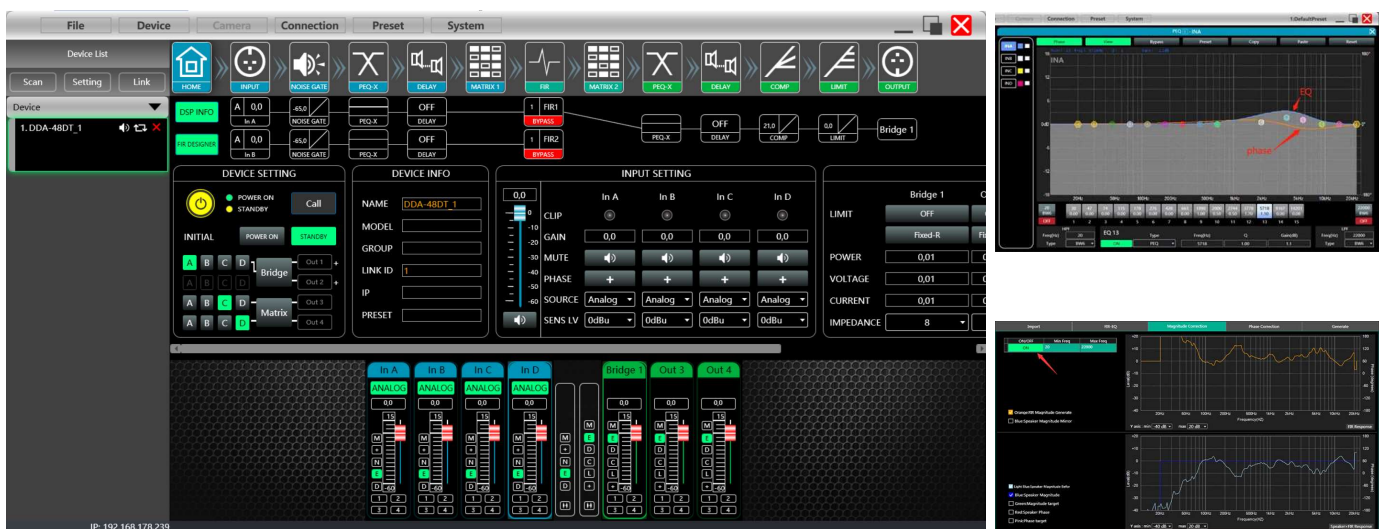
The installer can set a maximum output power / voltage / current for every channel. This amplifier can be used with any speaker in any project. It can be customized to all conditions.

User can monitor power, current, voltage, temperature and impedance from the display in real time. With RJ45/USB and common serial connector, the supplied PC software MusicAllDSP provides users a easy way to control multiple devices.



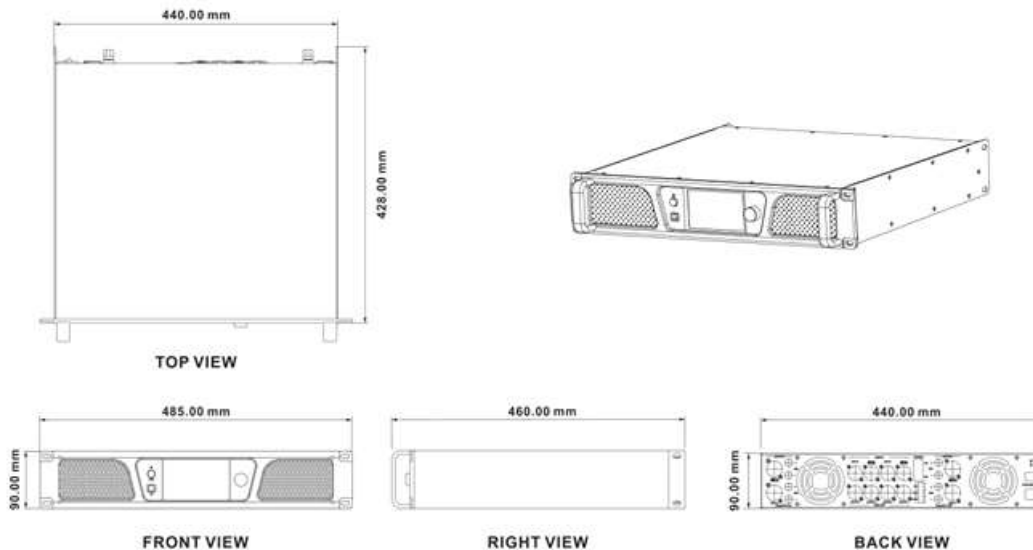
Software

The MusicAllDSP software provides the user a fast tool to control one or more devices through multiple methods: TCP/IP, USB, common serial port (RS232/485). Easily set DSP functions of devices, GPIO control and check central control codes. The configurations can be stored in presets, convenient for various applications.



4 channel Class D network DSP power amplifier

Dimensions



Technical specifications

Product	DDA-48DT	
Amplifier channels	4	
Output power	4Ω	8Ω
	1600W	800W
	2x 3200W in bridge mode	
100V output power	2x 1250W@100V in bridge mode	
70V output power	4x 1225W@70V	
Max. output voltage	80V	
Max. output current	20A	
Min. load output	4Ω	
Input connector	4x XLR	
Output connector	4x speakON + 4x binding post / 4x XLR link out	
Max. input level	20dBu/7.75V	
Sensitivity	12dBu (28.3dB, x26)	
	6dBu (34.3dB, x51.8)	
	0dBu (40.3dB, x103.5)	
SNR	100dB@12dBu, 1kHz	
Frequency response	20Hz to 20kHz (±0.5dB) @1W, 8Ω	
THD+N	<1%@1W, 8Ω	
Sampling	48k / 24bit	
Dante in	4 input channels	
Display	4.3" IPS touch display	
Protection	DSP limiter, high temperature, DC, high frequency, short circuit, back EMF, peak current limiter, Back EMF, Surge current limiter, startup delay, power circuit breaker protection, power over voltage/under voltage protection	
PC control software	MusicAllDSP	
Power requirement	VAC180~264 50/60Hz	
Device	Net weight 12.35kg, 485mm*460mm*90mm	
Package	Gross weight 16.4kg, 590mm*585mm*165mm	