

## 2 channel Class D network DSP power amplifier

**DDA-23DT** 2 x 300W@8Ω / 2x450W@4Ω

DDA-23DT is a 2 channel network DSP power amplifier, integrated with DSP processor, IPS color display and other powerful functions. This power amplifier supports a variety of input methods: analog/Dante network. User can select each analog or Dante signal with its priority, which realize signal backup function. Support constant resistance 8Ω/4Ω and constant voltage 100V/70V. Standard FIR automatic linear magnitude and phase function provides the user a powerful method to setup speaker settings.

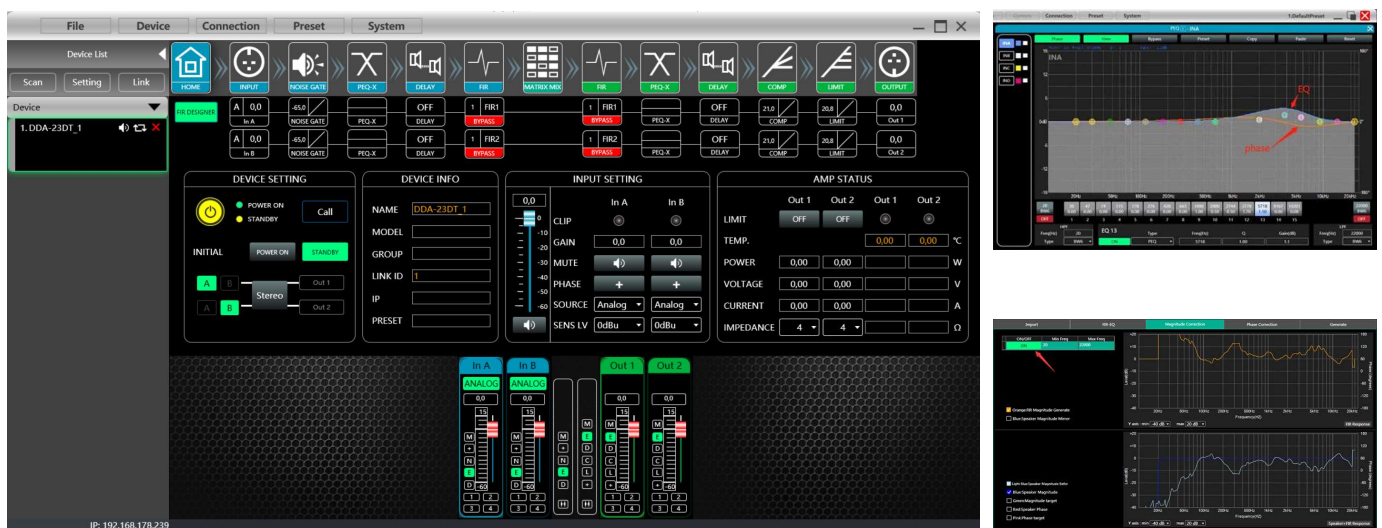
The installer can set a maximum output power / voltage / current for every channel. This amplifier can be used with any speaker in any project. This amp can be customized to all conditions.

User can monitor power, current, voltage, temperature and impedance from display in real time. With RJ45\USB and common serial connector, PC software MusicAllDSP provides the user an easy way to control multiple devices.



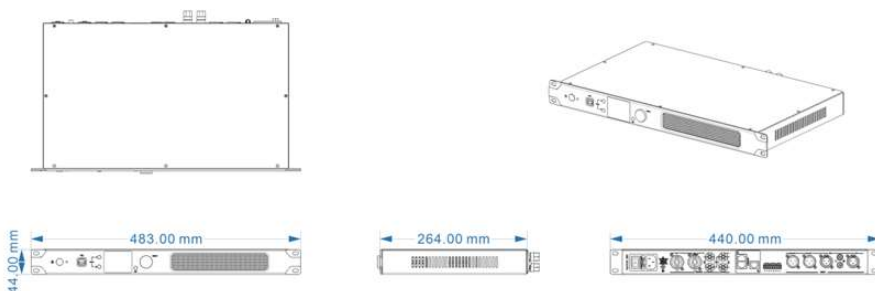
## Software

The MusicAllDSP software provides the user a fast tool to control one or more devices through multiple methods: TCP/IP, USB, common serial port (RS232/485). Easily set DSP functions of devices, GPIO control and check central control codes. The configurations can be stored in presets, convenient for various applications.



## 2 channel Class D network DSP power amplifier

### Dimensions



### Technical specifications

Product	DDA-23DT	
Amplifier channels	2	
Output power	4Ω	8Ω
	450W	300W
		900W in bridge mode
100V output power	900W@100V in bridge mode	
70V output power	612.5W@70V in bridge mode	
Max. output voltage	49V	
Max. output current	10A	
Min. load output	4Ω	
Input connector	2x XLR + 2x RCA	
Output connector	2x speakON + 2x binding post / 2x XLR link out	
Max. input level	6dBu sensitivity (14dBu, 3.88V)	
	0dBu sensitivity (8dBu, 1.94V)	
Sensitivity	6dBu sensitivity (30dB, x29.5)	
	0dBu sensitivity (36dB, x31.1)	
SNR	6dBu sensitivity (94dB)	
	0dBu sensitivity (94dB)	
Frequency response	20Hz to 20kHz (±0.5dB) @1W, 8Ω	
THD+N	<1%@1W, 8Ω	
Sampling	48k / 24bit	
Dante in	2 input channels	
Display	320*240 IPS color display	
Protections	DSP limiter, high temperature, DC, high frequency, short circuit, back EMF, peak current limiter, Back EMF, Surge current limiter, startup delay, power circuit breaker protection, power over voltage/under voltage protection	
PC control software	MusicAllDSP	
Power requirement	VAC100~240 50/60Hz	
Device	Net weight 3.4kg, 483mm*265mm*44.5mm	
Package	Gross weight 4.6kg, 520mm*442mm*90mm	